



The Sandpiper

2 Bedrooms, 2 Baths

Indoor Area 969

Outdoor Area 237

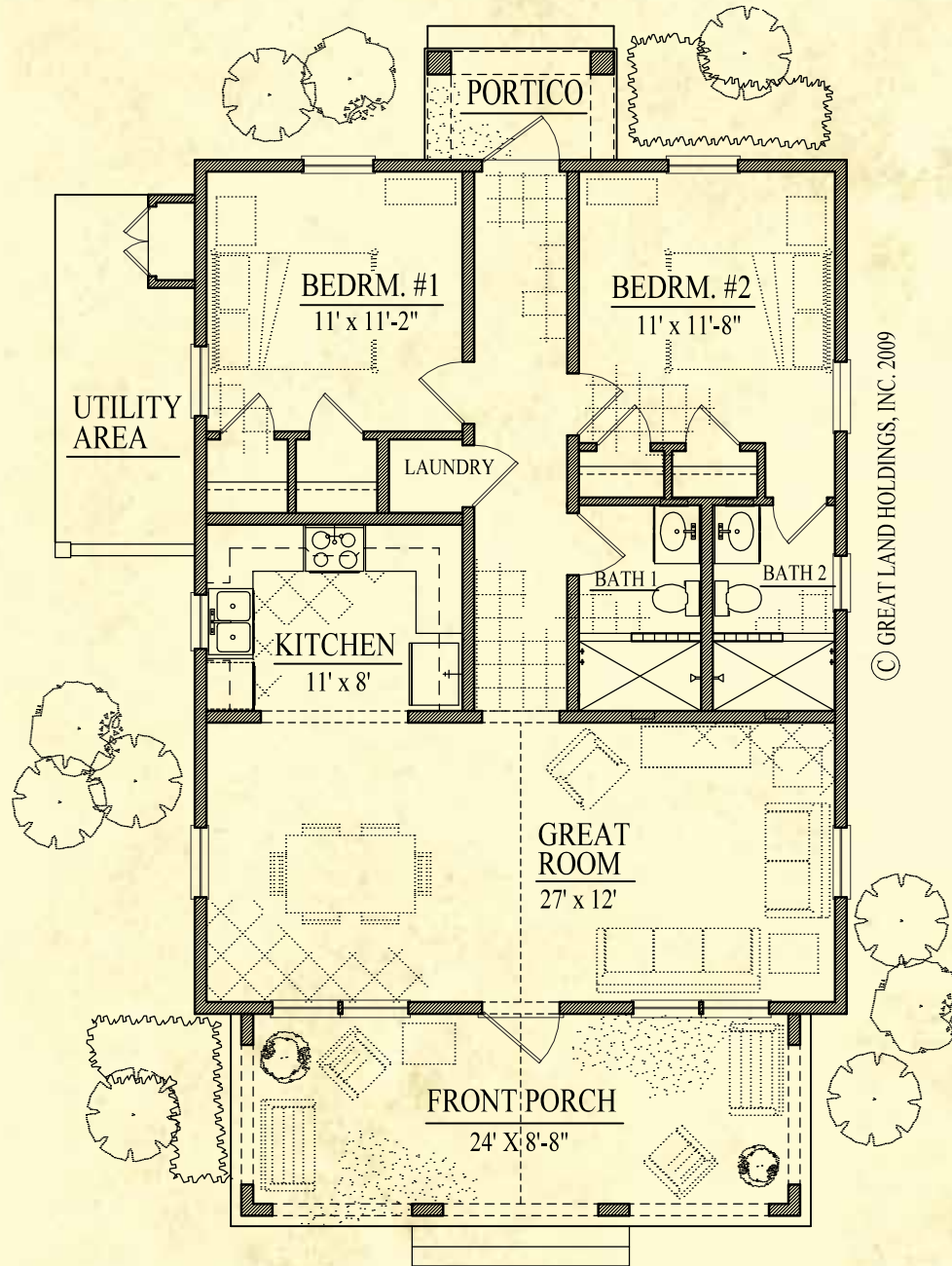
Total Area 1,206 sq. ft.

Elevations, floor plans and prices are subject to change. Construction may vary. Please consult working drawings for actual dimensions and specifications. The plan and all derivatives thereof are copyrighted by Great Land Holdings and may not be reproduced without written permission.



Home Features

The alluring design of this coastal cottage is accentuated by the sizable front porch, which provides a tranquil spot to enjoy sunlit vistas and moonlit nights. The open kitchen will make entertaining a pleasure. The central hallway channels the refreshing breezes past all of the rooms and onto the back porch. This enchanting cottage is complete with secluded bedrooms that ensure a peaceful nights rest.



© GREAT LAND HOLDINGS, INC. 2009

The Sandpiper

2 Bedrooms, 1.5 Baths
 Indoor Area 1,027
 Outdoor Area 245
 Total Area 1,272 sq. ft.

Elevations, floor plans and prices are subject to change. Construction may vary. Please consult working drawings for actual dimensions and specifications. The plan and all derivatives thereof are copyrighted by Great Land Holdings and may not be reproduced without written permission.